

WHITEROCKS RIVER DRAINAGES

One of the largest drainages, containing some eighty-one lakes and ponds. More than half of these sustain trout populations. Brook and cutthroat trout are found in lakes, ranging from 10,000 to 11,500 feet in elevation. A few of the lakes are heavily fished while others remain almost untouched throughout the season. Although the main trails are good, the terrain is rough. There are two principal sub-drainages, the East and West Forks. The "take-off," or starting point, for the West Fork lakes is at Pole Creek Lake, fifteen miles north of Whiterocks by dirt road. The starting point for the East Fork is at Paradise Park Reservoir. This reservoir lies twenty miles north of LaPoint and can be reached on dirt road. A Forest Service campground and guard station are located at the reservoir but no resort accommodations are available. Whiterocks and LaPoint are both accessible by oiled road east and north of Roosevelt.

CHEPETA, WR-64. Elevation 10,600 feet. Maximum surface acres 50, maximum depth 60 feet. Reservoir with 20 foot dam on the south end of the lake. Size and depth fluctuates. Located 20 miles from Paradise Park Reservoir by good Forest Service trail or poor jeep road. Several fishing streams enter this large reservoir. Excellent campsites with plenty of horse feed. Good fishing for both brook and cutthroat trout. Heavy fishing pressure. Plenty of open shoreline for fly fishermen with hip boots. Several good fishing lakes nearby. A small rubber boat or raft is helpful on this large water. Some natural reproduction. Large insect population too, and they bite as fast as the fish. Stocked cyclically with brook trout.



CLEVELAND, WR-7. 26 acres, elevation 10,700 feet, maximum depth 6 feet, average depth 4 feet. Fourteen miles north of Pole Creek Lake on good, marked Forest Service trail. ½ mile west of Queant. A large, shallow, spring-fed meadow lake in timberline country. Excellent evening fly fishing lake with very good campsites and horse feed. Large brook and cutthroat trout. Popular area receiving considerable fishing pressure. Stocked cyclically with cutthroat trout.

CLIFF, WR-49. Elevation 11,000 feet, maximum acres 40, maximum depth 55 feet. Reservoir, size and depth fluctuates 25 feet. From Paradise Park Reservoir 15 miles along good, posted, Forest Service trail or poor jeep road. Rough, heavily timbered, rocky terrain. Cliff lies against the rock slides which forms the only open shoreline. Poor campsites without horse feed. The jeep road goes by to the west of the lake. Good fishing for both brook and cutthroat trout; some 16 inches in length. Brook trout stocked cyclically.

DOLLAR, WR-43. 7 acres, elevation 11,000 feet, maximum depth 15 feet, average depth 5 feet. ½ mile southwest of Whiterocks Lake. A triangu-

lar shaped lake lying against the rock slides, in timbered terrain interspersed with meadows. No trail to the lake. Fair campsites with limited horse feed. Some open shoreline for fly fishing. Generally very good fishing for brook, cutthroat and rainbow trout. Stocked with brook trout.



ELBOW, WR-58. 25 acres, elevation 11,000 feet, maximum depth 27 feet, average depth 20 feet. From Chepeta, one mile northwest or from Sharlee, ½ mile north. No trail. Rough terrain, heavily timbered. Use campsites and horse feed at Chepeta or Sharlee. Some open shoreline for fly fishing. A striking, elbow-shaped lake lying against the rock slides. Good fishing for brook trout. Stocked.

FIGURE-EIGHT, WR-56. 3 acres, elevation 10,700 feet, maximum depth 5 feet, average depth, 3 feet. From Chepeta Lake, ¼ mile up the north-west stream. Rough terrain, no trail. Campsites and horse feed in the area. A small, cold, shallow lake inhabited by extremely wary cutthroat trout. Partly open, marshy shoreline. Seldom visited. Natural reproduction.



HIDDEN, WR-63. 12 acres, elevation 10,500 feet, maximum depth 48 feet, average depth 27 feet. A deep, elliptical lake lying in a small pocket in dense conifers. Few campsites and little horse feed. No open shoreline. From Paradise Park Reservoir 15 miles by Forest Service trail to "fork" in trail, leave trails and head west for a good mile over rough terrain. Hard to find. Stocked for the first time in 1963 and 1964 with brook trout. Should be a good one!



LARVAE, WR-12. 4 acres, elevation 10,200 feet, maximum depth 28 feet, average depth 15 feet. Two miles east of Pole Creek Lake and one mile east of the west fork trail "take-off" point. A pretty lake lying in dense conifers. Heavy fishing pressure. Campsites with horse feed in Pole Creek Lake area. Fair fishing for brook trout. Stocked with fingerling brook every year.

LOWER ROCK, WR-17. 12 acres, elevation 10,600 feet, maximum depth 39 feet, average depth 20 feet. 1½ miles northwest of Pole Creek Lake. No trail to the lake. Timbered, rocky terrain with little open shoreline. A deep lake receiving some fishing pressure. Generally good fishing for brook trout. A few very large cutthroat in the lake. Campsites and horse feed can be found to the east. Stocked cyclically with brook trout.

MIDDLE ROCK, WR-16. 6 acres, elevation 10,600 feet, maximum depth 10 feet, average depth 6 feet. Nearly two miles northwest of Pole Creek Lake. Rough, rocky, timbered terrain with no trail. Little open shoreline for fly fishermen. Generally receives little fishing pressure. Campsites and horse feed can be found to the east. Good fishing for brook trout. A few cutthroat in the lake. Stocked cyclically with brook trout.

MOCASSIN, WR-53. 11 acres, elevation 10,700 feet, maximum depth 27 feet, average depth 10 feet. A small reservoir with a five-foot dam along the southwest end of the lake. Rough terrain, but very good camping sites and horse feed in the area. Lies ¼ mile east of Chepeta. Rock slides along the entire east side of the lake form the only open shoreline. Fast fishing for brook and cutthroat trout. Stocked occasionally with brook.

OGDEN, WR-5. 14 acres, elevation 11,000 feet, maximum depth 21 feet, average depth 8 feet. 16 miles north of Pole Creek Lake on good Forest Service west fork trail. One mile northwest of Queant. A long, deep lake lying against the rock slides. Some open shoreline. Good campsites with horse feed and running water. Fine fishing for wary cutthroat trout. Moderate fishing pressure. Stocked cyclically with cutthroat trout.

PAPOOSE, WR-52. 8 acres, elevation 10,750 feet, maximum depth 22 feet, average depth 8 feet. Reservoir with 7 foot dam at the south end of the lake. One mile north of Chepeta. No trail. Open country with shoreline completely accessible for fly fishing. Excellent campsites and horse feed in the area. Wary brook and cutthroat trout, but good fishermen sport heavy creels. Stocked with brook trout.

PARADISE PARK RESERVOIR, WR-18. Elevation 10,000 feet, size and depth fluctuates, maximum acreage approximately 137, depth 10 to 36 feet. By dirt road 20 miles north of LaPoint. Timbered area with excellent Forest Service campground facilities. A forest Service guard station is located just south of the dam. A "take-off" point into many of the high lakes. A popular fishing site for rainbow trout. Stocked annually.

PEARL, WR-45. 2½ acres, elevation 11,000 feet, maximum depth 15 feet, average depth 6 feet. A small, pear-shaped lake up under the rock ledges. One mile north of Whiterocks Lake. No trail and terrain is rough, heavily timbered and rocky. No good campsites at lake, very good campsites with horse feed around Whiterocks Lake. Some open shoreline for fly fishing. Fast fishing for brook trout. Stocked periodically.

POINT (ADAMS) WR-6. 16 acres, elevation 10,800 feet, maximum depth 21 feet, average depth 8 feet. Twelve miles north of Pole Creek Lake on Forest Service west fork trail. Lake lies west of main stream and two miles south of Queant, at base of bald ridge with rocky, timbered shoreline. Campsites and horse feed east on the main stream. Good fishing for brook trout. Little fishing pressure. Stocked cyclically with brook trout.

POLE CREEK LAKE, WR-13. 5 acres, elevation 10,200 feet, maximum depth 10 feet, average depth 4 feet. By dirt road 15 miles north of Whiterocks. An open meadow lake receiving heavy fishing pressure. Some campsites and horse feed in surrounding area. Moderately good fishing for rainbow trout. Stocked annually.



QUEANT, WR-4. 57 acres, elevation 10,700 feet, maximum depth 44 feet, average depth 13 feet. 14 miles north of Pole Creek Lake along good posted Forest Service west fork trail. Open meadow with scattered timber providing excellent campsites with plenty of horse feed. Several streams with running water. This large half-moon shaped lake is popular and receives considerable use. Plenty of open shoreline for the fly fisherman. Generally good evening fishing for brook trout. Stocked cyclically with brook trout.

RC #1, WR-2. 10 acres, elevation 10,650 feet, maximum depth 16 feet, average depth 8 feet, 10 miles north of Pole Creek Lake on good Forest Service trail. Two miles southeast of Queant Lake. Rough, heavily timbered terrain with slide rock completely along the east side of the lake. Open rock shoreline for half of the lake. Fishing pressure is light. Campsite available just south of the lake with limited horse feed. Excellent campsites and horse feed can be found ½ mile east along the main stream. Good fishing for both brook and cutthroat trout. The mosquitoes bite as fast as the fish, so have as much repellent as fishing tackle. East RC #2 forms a small part of #1. Stocked periodically with cutthroat trout.

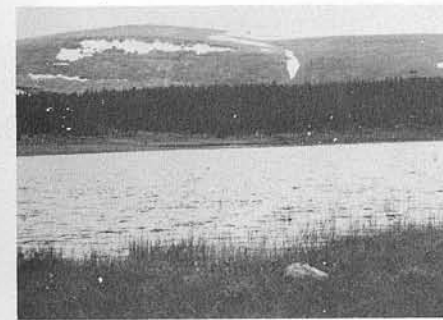
READER, WR-66. 10 acres, elevation 11,150 feet, maximum depth 10 feet, average depth 5 feet. From Chepeta Lake 4 miles west by Forest Service trail into the area. Reader lies at the base of the pass near the Fox Lake trail. Mostly open terrain with scattered timber. Open shoreline for the fly fishermen. Good campsites with some horse feed. Excellent fishing for both brook and cutthroat trout. Some natural reproduction. Stocked periodically with cutthroat trout.

RASSMUSSEN #1, WR-35. 19 acres, elevation 10,500 feet, maximum depth 5 feet, average depth 3 feet. Twelve miles north from Pole Creek Lake along Forest Service west fork trail, then one mile west on sheep trail. Two miles south of Point Lake. Rocky, timbered terrain with few campsites and little horse feed. Excellent fishing for brook trout. Stocked cyclically with brook trout.

RASSMUSSEN #2, WR-36. 14 acres, elevation 10,500 feet, maximum depth 8 feet, average depth 4 feet. A sister lake of WR-35, it lies just southeast and almost joins lake #1. Generally provides excellent fishing and good fishermen seldom leave hungry. Some open shoreline for fly fishermen. Stocked cyclically with brook trout.



SAND, WR-42. 6 acres, elevation 11,000 feet, maximum depth 5 feet, average depth 3 feet. ½ mile northeast along the meadows from Teds. A small, open, meadow lake lying against the rock slides. Excellent fly fishing for pan-sized brook and cutthroat trout. Little fishing pressure. Very good campsites with horse feed. Natural reproduction.



SHARLEE, WR-57. 10 acres, elevation 10,800 feet, maximum depth 4 feet, average depth 3 feet. Two miles west of Chepeta Lake on good Forest Service trail. A pretty, meadow lake with completely open, marshy shoreline. Excellent campsites with horse feed. Several springs provide drinking water. An excellent fly fishing water with hip boots or a small rubber boat. Little fishing pressure and the fishing is great. Good population of cutthroat and brook trout. You won't go hungry here. Some natural reproduction with periodical stocking.

TAYLOR, WR-8. 25 acres, elevation 11,350 feet, maximum depth 53 feet, average depth 10 feet. Sixteen miles north of Pole Creek Lake along good Forest Service west fork trail. Two miles northeast of Queant. A tadpole shaped lake lying in the open, rocky, terrain above timberline. Open brushy shoreline for fly fishing. Poor campsites with little horse feed. Good fishing for all sizes of brook trout. Stocked cyclically with brook trout. Seldom visited.

TEDS, WR-44. 14 acres, elevation 10,500 feet, maximum depth 20 feet, average depth 7 feet. From Paradise Park Reservoir 15 miles along excellent Forest Service trail on poor jeep road. Teds is often confused with Workman Lake, but lies one mile north of Workman. The shoreline is mostly timbered, with enough open meadow to provide excellent fly fishing areas. A good looking, productive lake housing large brook and cutthroat trout. Fishing pressure is heavy but the evening fishing is generally good. Excellent campsites with good drinking water and plenty of horse feed. A good lake at which to stay. Stocked with brook trout.



UPPER ROCK, WR-14. 15 acres, elevation 10,600 feet, maximum depth 28 feet, water level fluctuates. Two miles northwest of Pole Creek Lake over very rough terrain, no trail. A large lake lying in a deep, rocky basin. Open

rock shoreline. Little fishing pressure on this remote lake. No campsites. Generally good fishing. Stocked cyclically with cutthroat trout.



WALK-UP, WR-55. 13 acres, elevation 11,500 feet, maximum depth 60 feet, average depth 32 feet. From Chepeta, two miles northwest over difficult and rocky terrain. No trail. A high, deep, cold lake completely encompassed by slide rock. This lone lake lies at the very head of a small rock basin. No campsites or horse feed. Stocked experimentally with brook trout. One to watch!



WATKINS, WR-48. 18 acres, elevation 11,000 feet, maximum depth 36 feet, average depth 15 feet. From Cliff Lake 100 yards southeast along the rock slides. Rough, heavily timbered, rocky terrain. No trail, poor campsites without horse feed. Very few fishermen. Some open shoreline. Light milky water coloration. Stocked with brook trout.

WHITEROCKS RESERVOIR LAKE, WR-46. Elevation 10,800 feet, maximum acres 35, maximum depth 42 feet. Water level fluctuates 20 feet. Located some 20 miles via good Forest Service trail or poor jeep road. The shoreline consists of about half meadow and half rock-timber, so take along your boots and fly rod. Very good camping areas with lots of running water. Horse feed generally available in the area. Some natural reproduction, stocked. Heavy fishing pressure. Brook and cutthroat trout to 2 and 3 pounds in weight.



WIGWAM, WR-54. 4 acres, elevation 10,750 feet, maximum depth 14 feet, average depth 6 feet. Reservoir with a 5 foot dam on south end of the lake. From Chepeta, ½ mile northeast. No trail. Rock slides completely along the east side of the lake. Lies in very rough, rocky area, recommend use of good campsites and horse feed at Chepeta. Generally good fishing for both brook and cutthroat trout. Stocked periodically with brook trout.

WOOLEY, WR-40. 18 acres, elevation 11,000 feet, maximum depth 42 feet, average depth 14 feet. One mile east of Workman at the head of the

basin against the rock slides. No trail. Open rock shoreline encompasses this cold, deep lake. Excellent campsites and horse feed near Workman Lake. Fair fishing for brook trout. Stocked periodically.

WORKMAN, WR-50. 20 acres, elevation 10,500 feet, maximum depth 14 feet, average depth 4½ feet. From Paradise Park Reservoir 17 miles along posted, good Forest Service trail or poor jeep road. Two miles north of Cliff Lake. Heavily timbered terrain with limited open shoreline. Good campsites with horse feed in the area. Many springs. A few large brook trout. Generally fast fishing for cutthroat trout. Popular lake. Stocked with cutthroat.



WR-9. 3 acres, elevation 11,200 feet, maximum depth 12 feet, average depth 5 feet. Sixteen miles north of Pole Creek Lake on Forest Service west fork trail and ½ mile southeast of Taylor. A small lake above timberline, lying in the open gently sloping basin below Taylor Lake. Poor, rocky campsites with limited horse feed. Open shoreline for fly fishing. Stocked experimentally with brook trout. A good one to keep an eye on, may be good!

WR-19. 10 acres, elevation 10,500 feet, maximum depth 18 feet, average depth 8 feet. Two miles north of Pole Creek Lake around the east side of the rock slides. No trail to the lake. Very rocky, timbered terrain. Poor campsites with no horse feed. Some large, wary cutthroat trout inhabit this lake. Seldom visited. Stocked periodically with cutthroat.

WR-34. 9 acres, elevation 11,500 feet, maximum depth 20 feet. Two miles southwest of Cleveland Lake in small open rock basin. A cold, remote lake with open, brushy shoreline. Very poor campsites. No horse feed. Stocked experimentally with brook trout and could produce some fair fishing.

WR-37. 3 acres, elevation 10,600 feet, maximum depth 13 feet, average depth 6 feet. One mile southeast of Rasmussen #2, around the tip of the rock slides. No trail. A narrow, rocky lake with some open shore. Some scattered timber with poor campsites. No horse feed. Few fishermen. Small population of large, cutthroat trout. Moderate fishing for brook trout. Stocked with brook trout.

WR-65 (HELL HOLE). 8 acres, elevation 10,850 feet, maximum depth 6 feet, average depth 4 feet. From Chepeta 4 miles west by Forest Service trail into the area. WR-65 lies ½ mile southwest of the trail against the rock slides. Rough, timbered country. Campsites and horse feed in the area. Mostly open shoreline. Stocked experimentally with brook.

WR-67, (HORSESHOE). 12 acres, elevation 11,100 feet, maximum depth 14 feet, average depth 6 feet. One mile southeast of Reader Lake along the rock slides. No trail. An arrowhead shaped lake encompassed by rocks and conifers. Some open shoreline. Campsites and horse feed in the area. Light fishing pressure. Fishing is fast for cut-throat trout. Stocked.

WR-73. 8 acres, elevation 11,000 feet. From Rasmussen Lake two miles northwest into the head of a small basin. No trail. Very rough, rocky terrain. Rock slides come into this triangular shaped lake, and form more than half the shoreline. Few campsites with little horse feed. Stocked experimentally with brook trout. The lakes in this rugged basin could provide some excellent fishing.

WR-74. 4 acres, elevation 11,000 feet, maximum depth 14 feet, average depth 7 feet. Two hundred yards east of WR-75. No trail. Few campsites and little horse feed. Rock slides enter the lake along the north side. Some open

shoreline. Stocked experimentally.

WR-75. 3 acres, elevation 10,800 feet, maximum depth 8 feet, average depth 5 feet. Two hundred yards south of WR-74, no trail. Few campsites and little horse feed. Some open shoreline. Stocked experimentally with brook.

WR-76. 8 acres (combined), elevation 10,700 feet, maximum depth 7 feet. From Rasmussen Lake one mile northwest via sheep trail along creek. Two shallow, meadow lakes lying side by side, connected by a large stream, and surrounded by conifers. Campsites with some horse feed in the area. Excellent fly fishing areas. Stocked experimentally with brook trout.

WR-77. 4 acres, elevation 10,800 feet, maximum depth 15 feet. From Rasmussen one mile west or from WR-76, ½ mile south. Rough terrain, no trail rock slides form half the shoreline. No campsites or horse feed by the lake. Stocked experimentally with brook.

